

Customer :

customer

Customer part :

customer part

Comment :

Comment

S1=0.69

S2=12.06

Tmax=441

Tp S2=480.0

PI=0.05

HI=238

Sample =9107

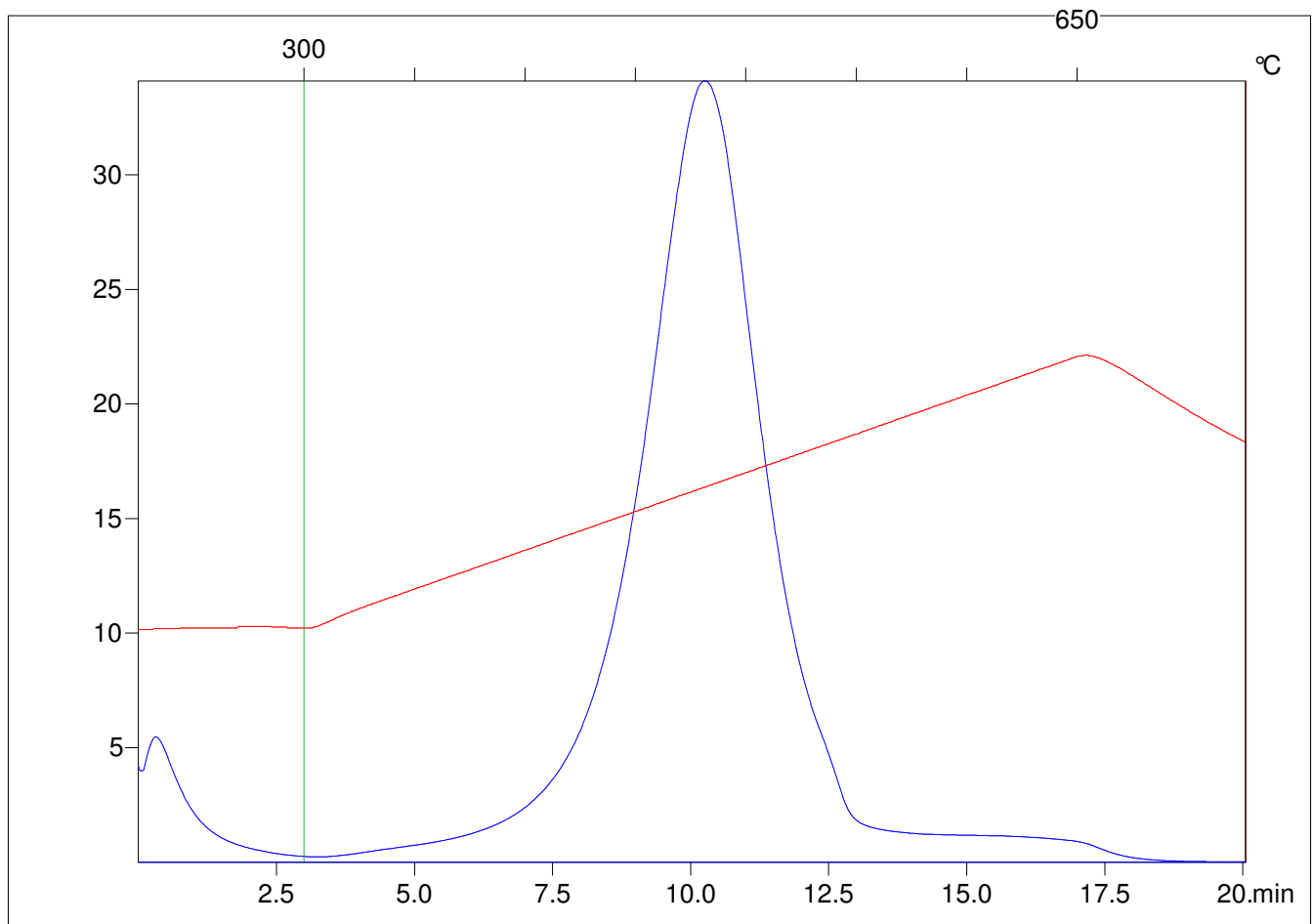
Method =Bulk Rock

Cycle=Basic

KFID(10*9)=1444

Qty =70.8

TOC=5.06



C:\VINC\PK2_1792\PK026.R00 : FID pyrolysis graphic

State

Pyro Status

Oxi Status